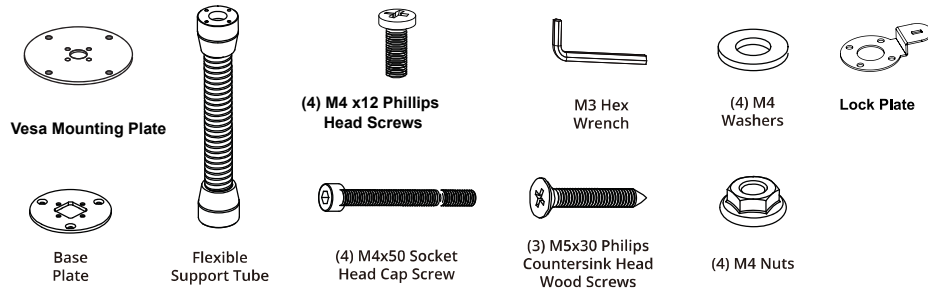


X Flex Installation Instructions

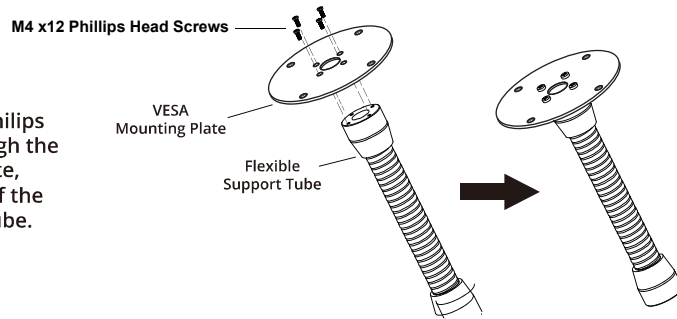
If charging is required, install the charge cable at the tablet first [refer Sprocket tablet installation guide]

Component Checklist



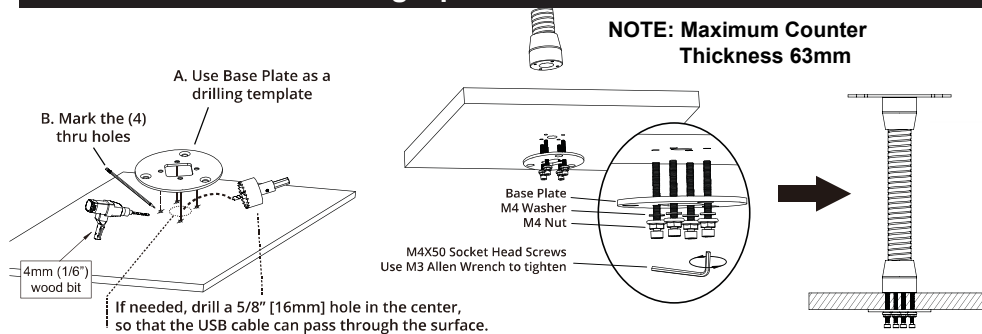
Flexi Tube & VESA Mounting Plate Assembly

Install (4) M4x12 Philips Head Screws through the VESA Mounting Plate, and into one end of the Flexible Support Tube.

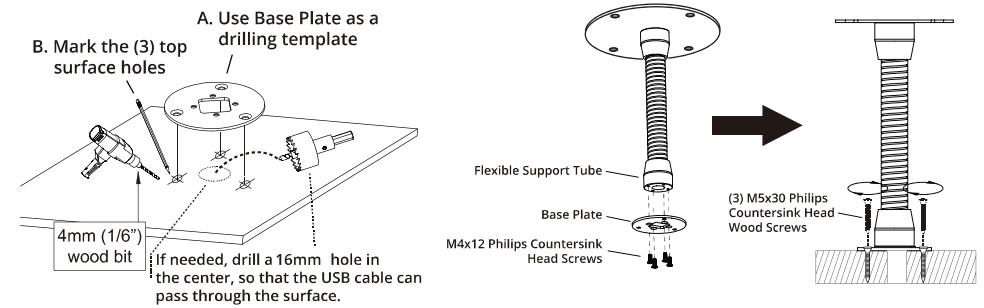


Under Counter Mounting Option

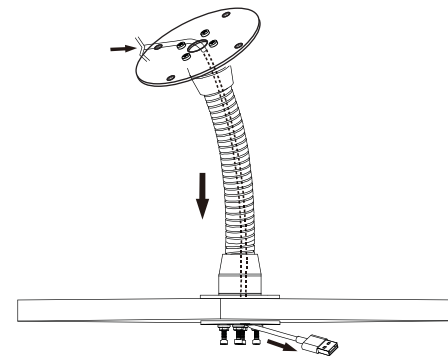
NOTE: Maximum Counter Thickness 63mm



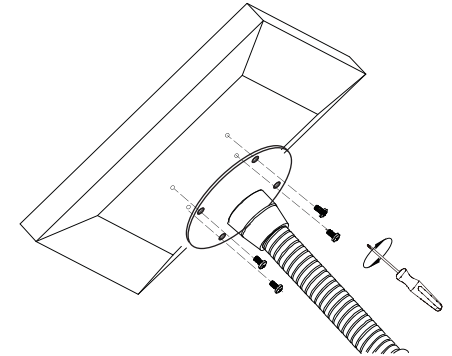
Surface Mounting Option



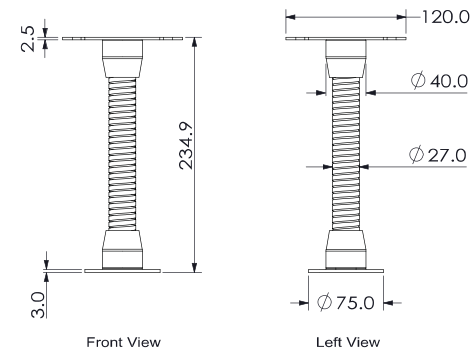
Cable Installation



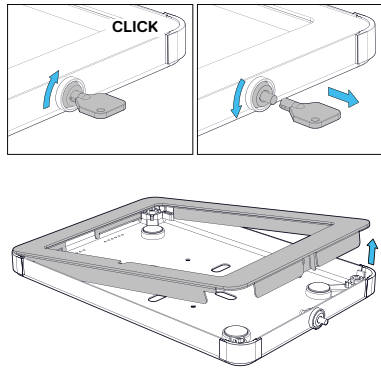
Enclosure Assembly



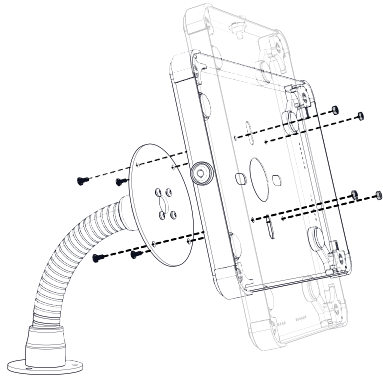
Dimensions



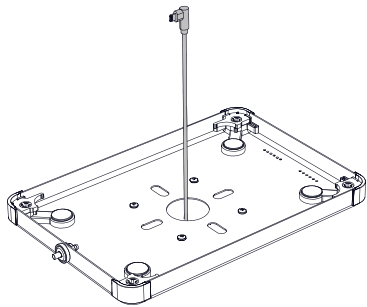
1 / 5



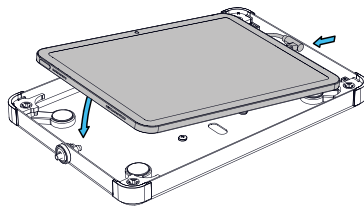
2 / 5



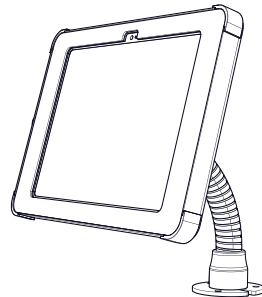
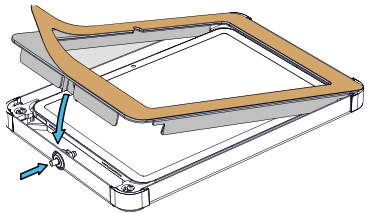
3 / 5



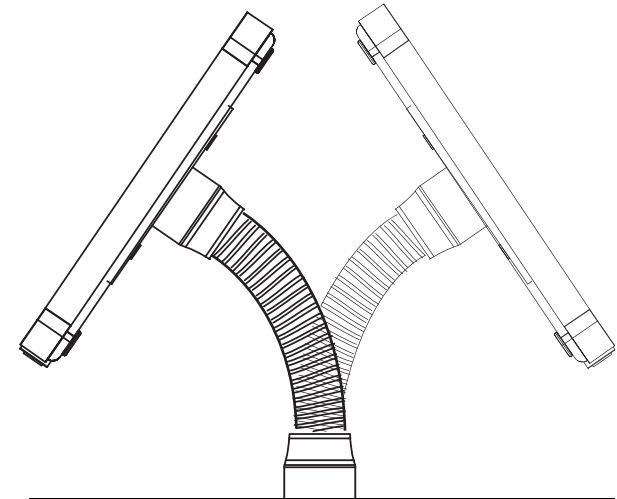
4 / 5



5 / 5

**X Flex**

Installation & Assembly Guide



Find more information, warranty details and instructional videos at www.sprocket.com.au

2024 Sprocket Pty Ltd.
All Rights Reserved.